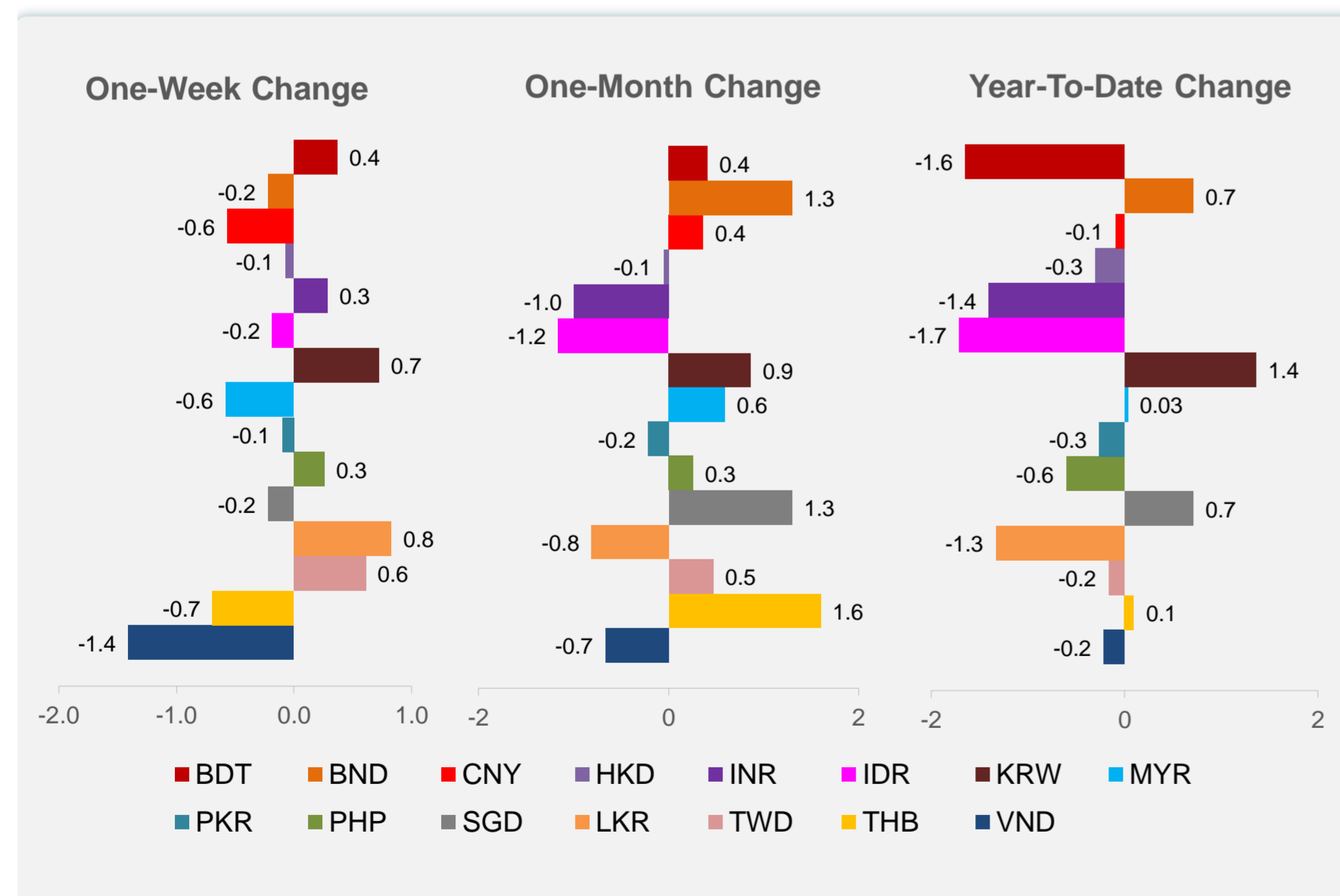
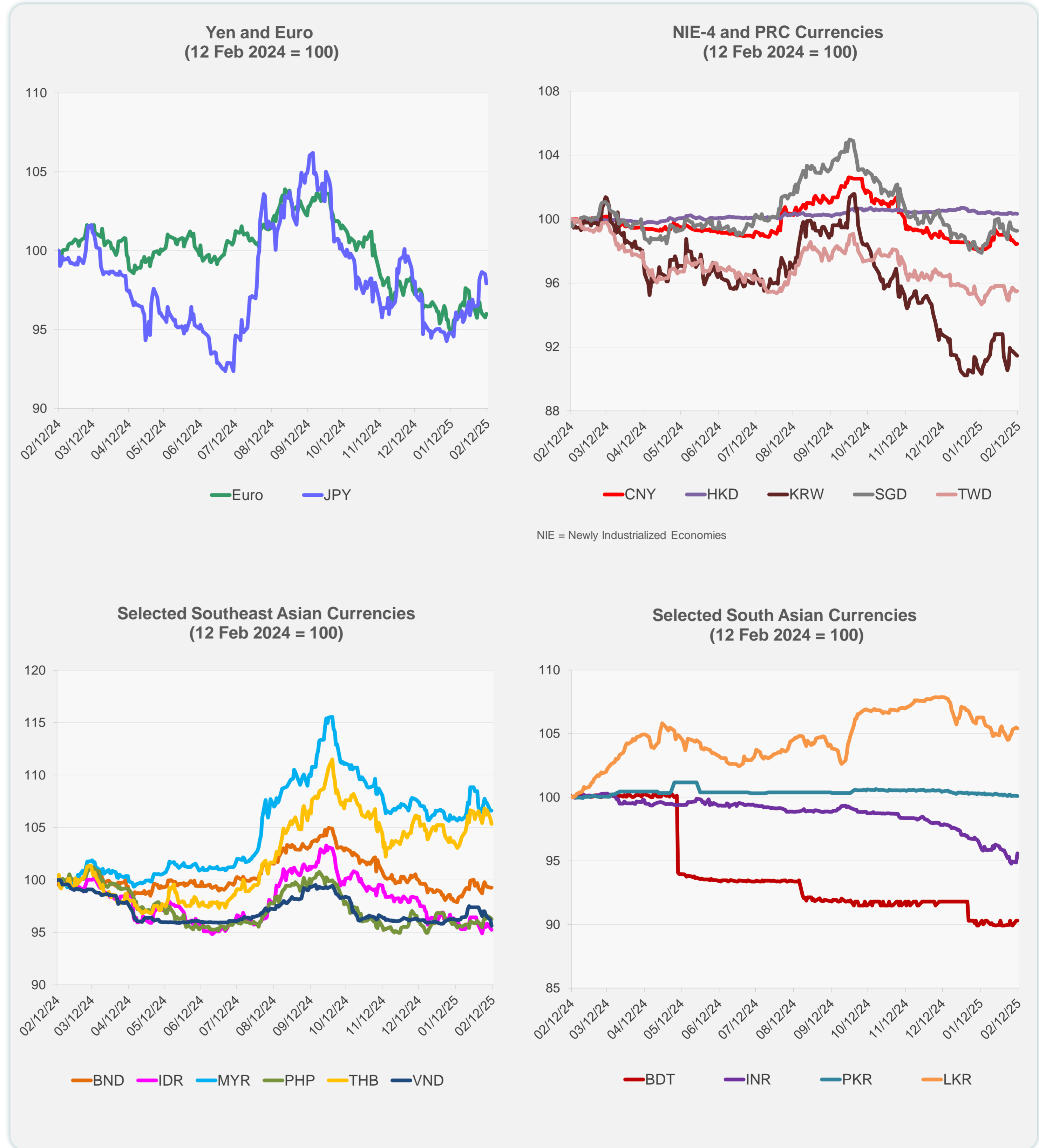
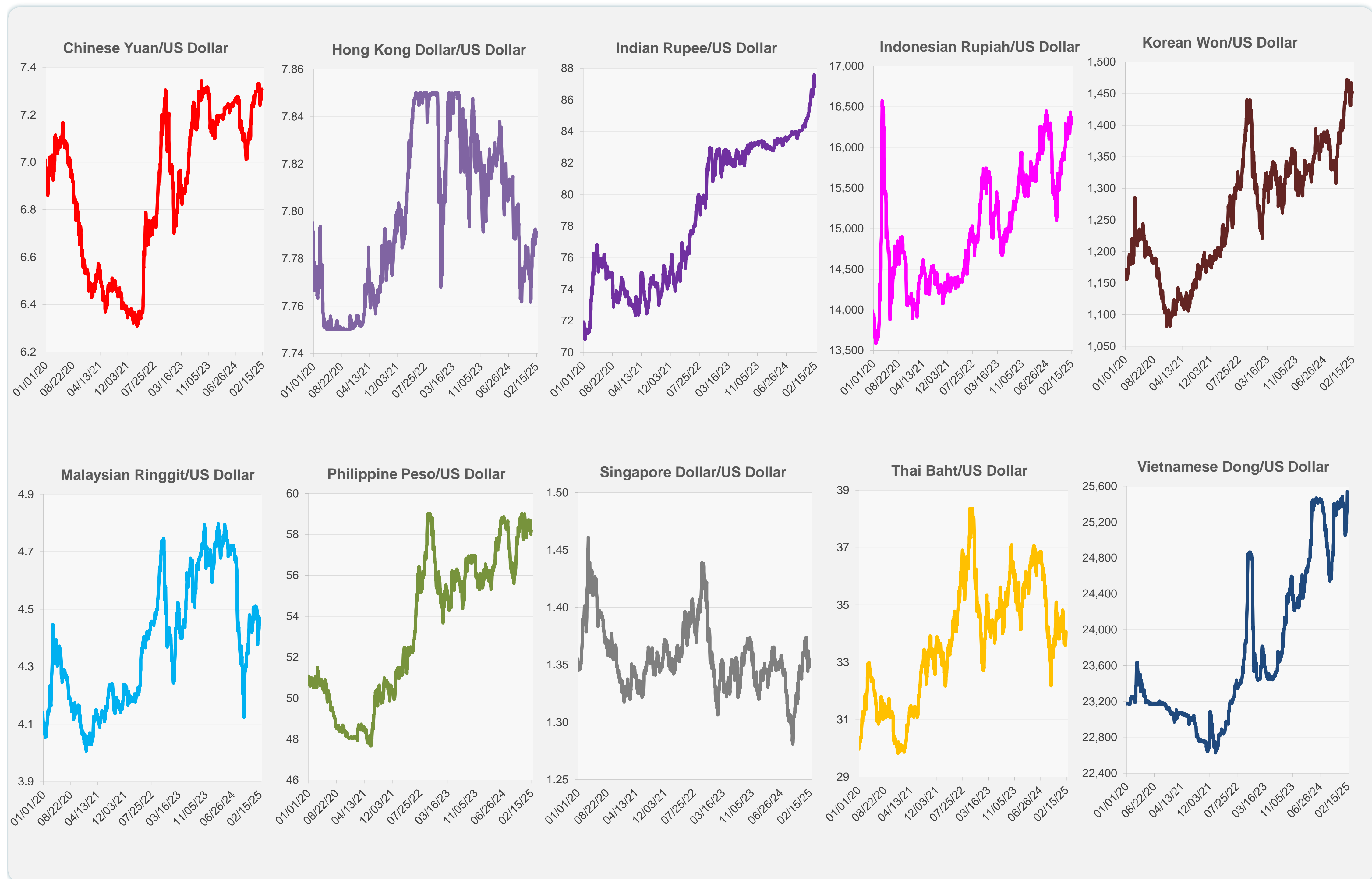


	Latest Closing	% change from Previous Day	% change from 01-Jan-25
Euro	0.97	0.25	-0.13
Japanese yen (JPY)	152.52	-0.59	3.05
Bangladeshi taka (BDT)	121.50	0.00	-1.65
Brunei dollar (BND)	1.35	-0.01	0.71
Chinese yuan (CNY)	7.31	0.03	-0.09
Hong Kong dollar (HKD)	7.79	-0.03	-0.30
Indian rupee (INR)	86.83	0.75	-1.40
Indonesian rupiah (IDR)	16,375.00	-0.18	-1.71
Korean won (KRW)	1,452.40	-0.08	1.36
Malaysian ringgit (MYR)	4.47	0.00	0.03
Pakistan rupee (PKR)	279.10	-0.04	-0.26
Philippine peso (PHP)	58.20	-0.15	-0.60
Singapore dollar (SGD)	1.35	-0.01	0.71
Sri Lanka rupee (LKR)	296.95	-0.06	-1.33
Taipei,China NT dollar (TWD)	32.84	0.02	-0.16
Thai baht (THB)	34.06	-0.48	0.10
Vietnamese dong (VND)	25,540.00	-0.59	-0.22



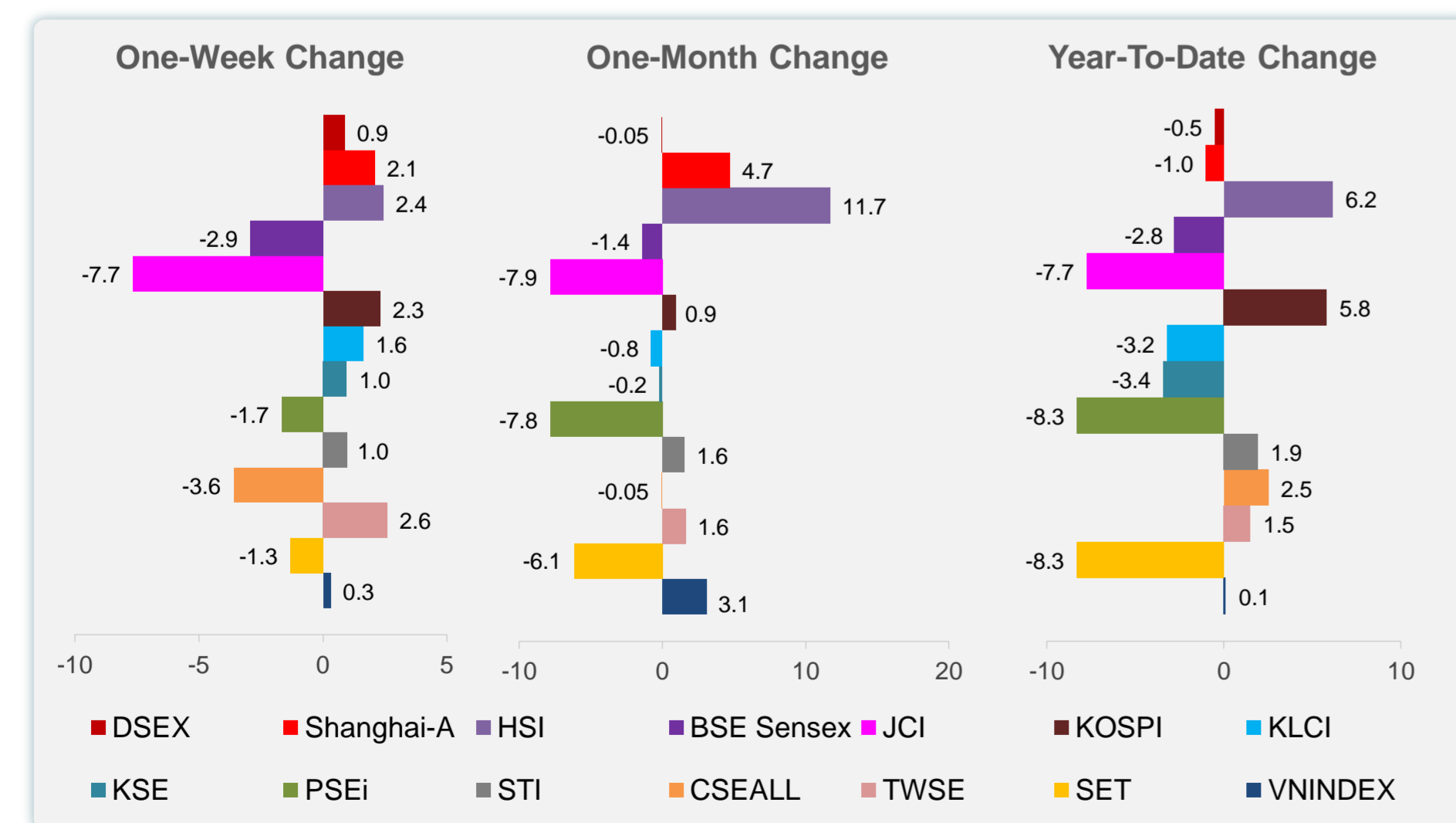
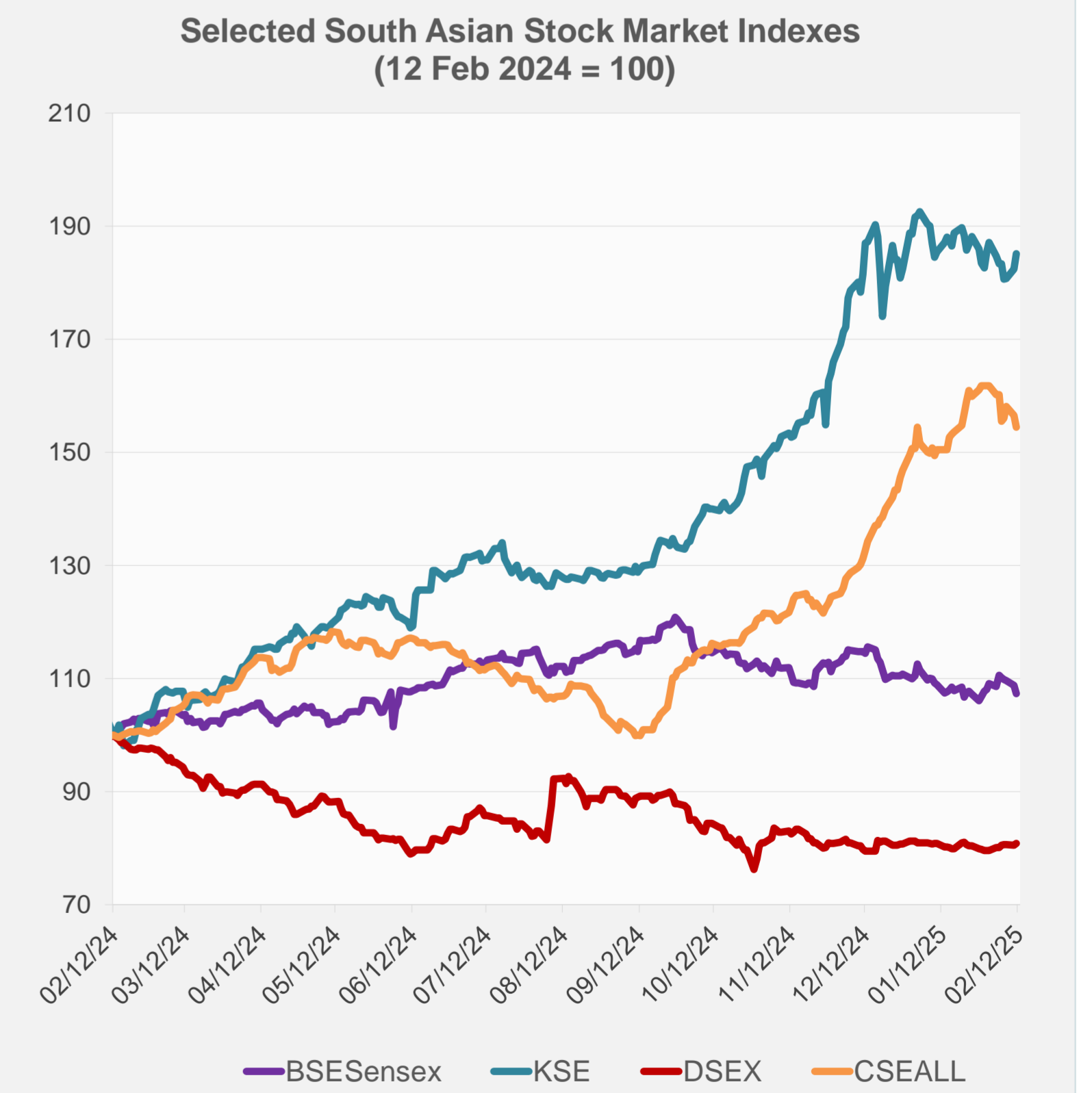
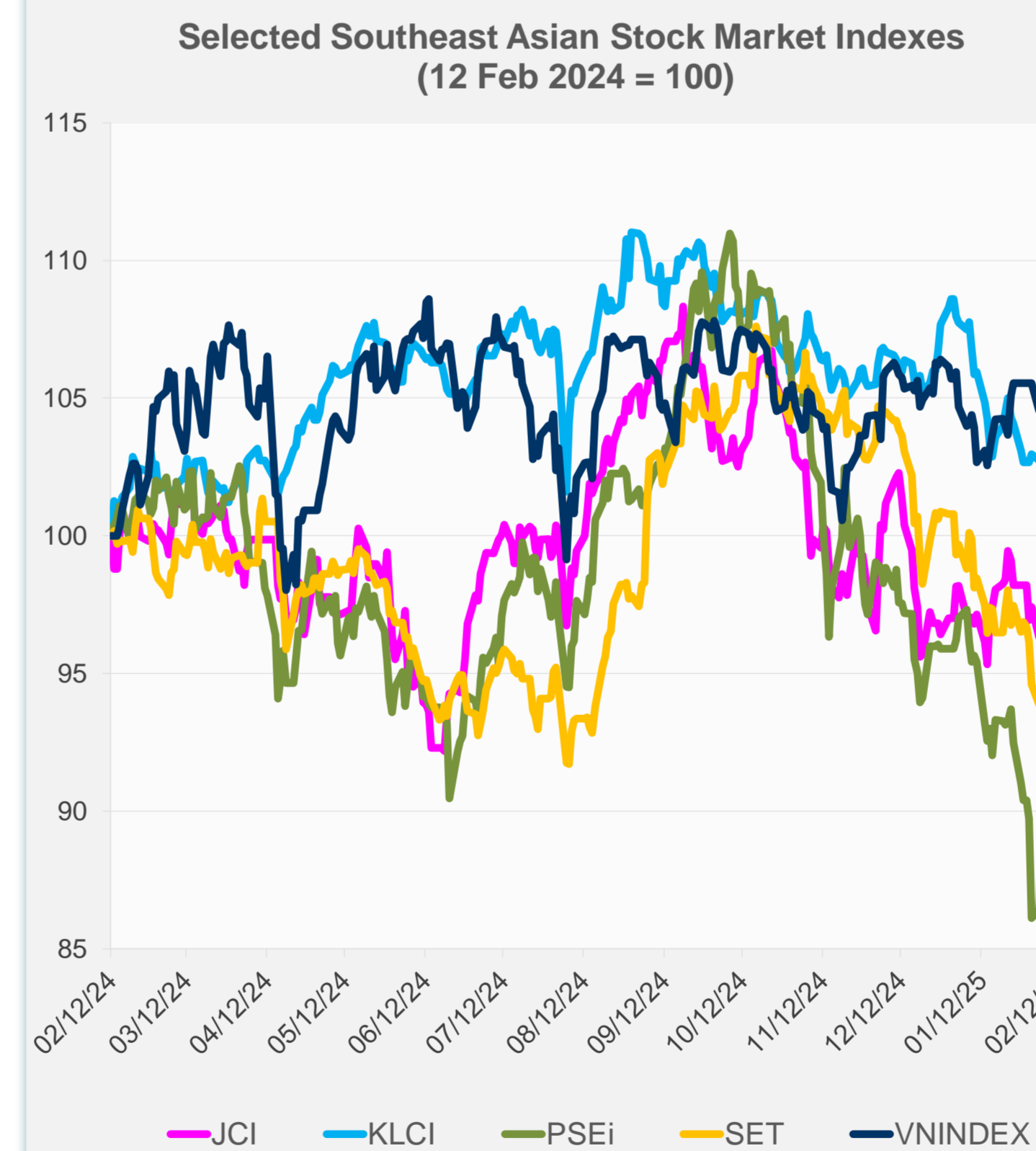
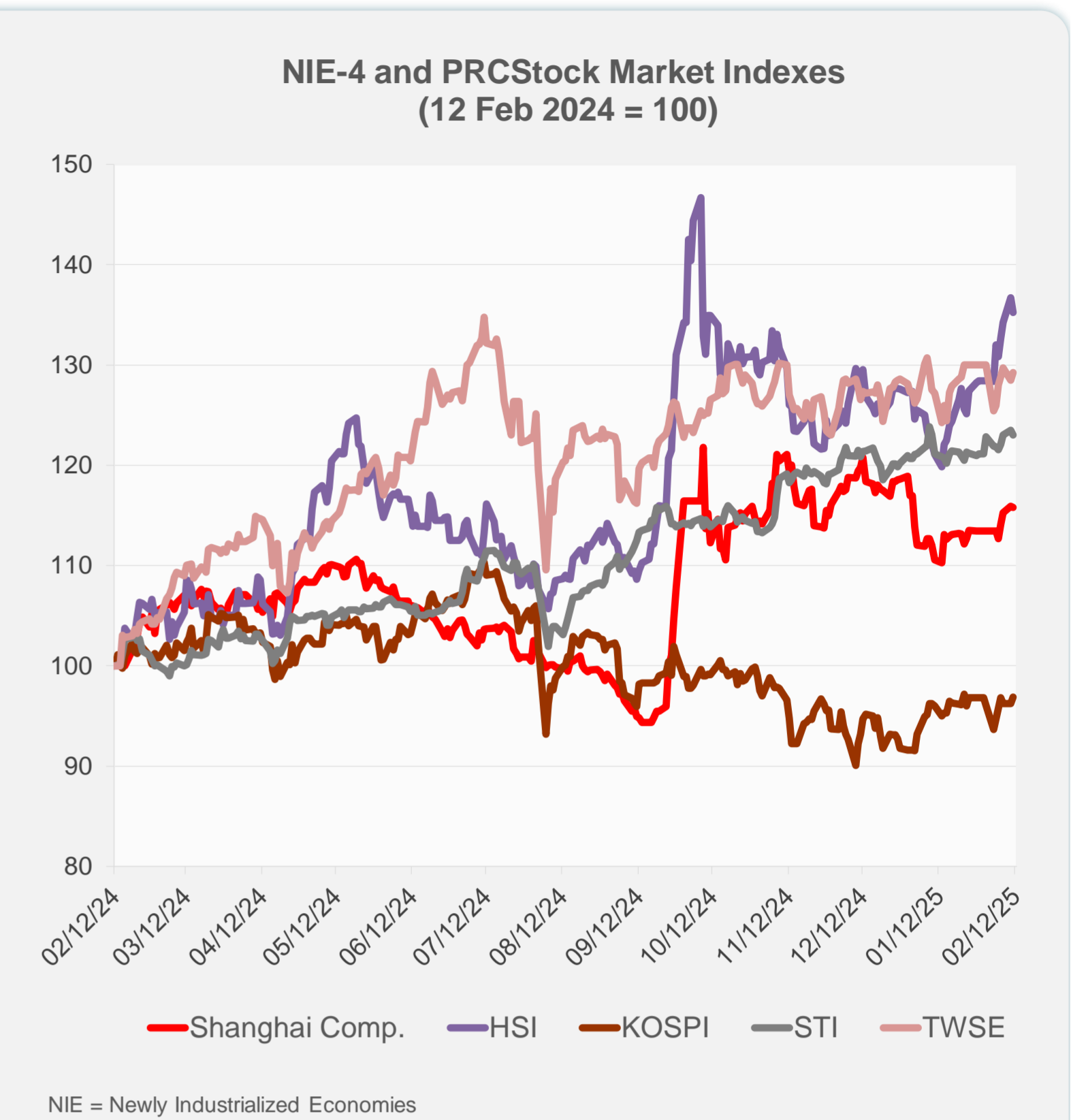
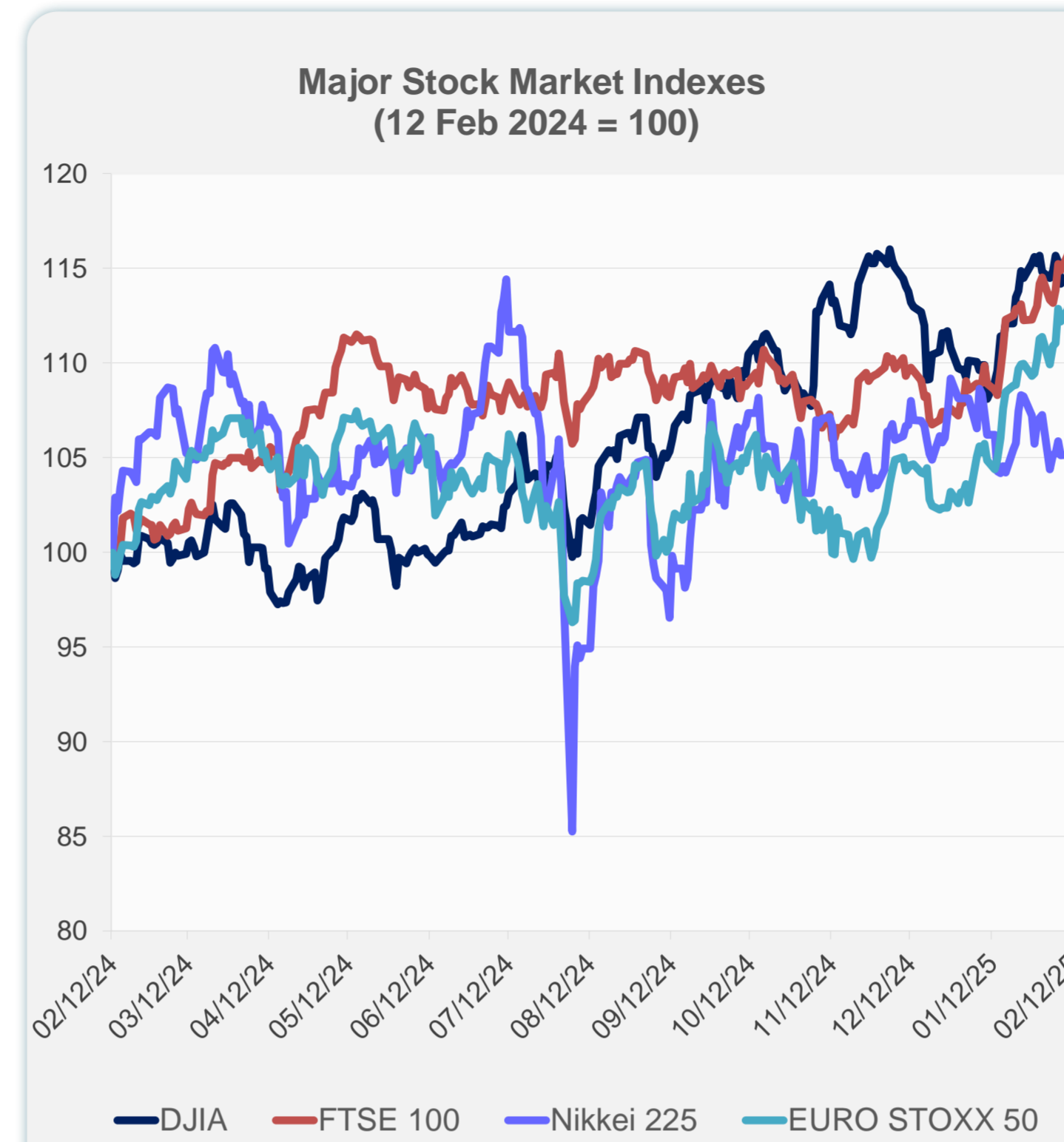
Note: Negative/Decreasing values indicate depreciation of local currency, and positive/increasing values indicate appreciation.
Source: ADB calculations using data from Haver Analytics.



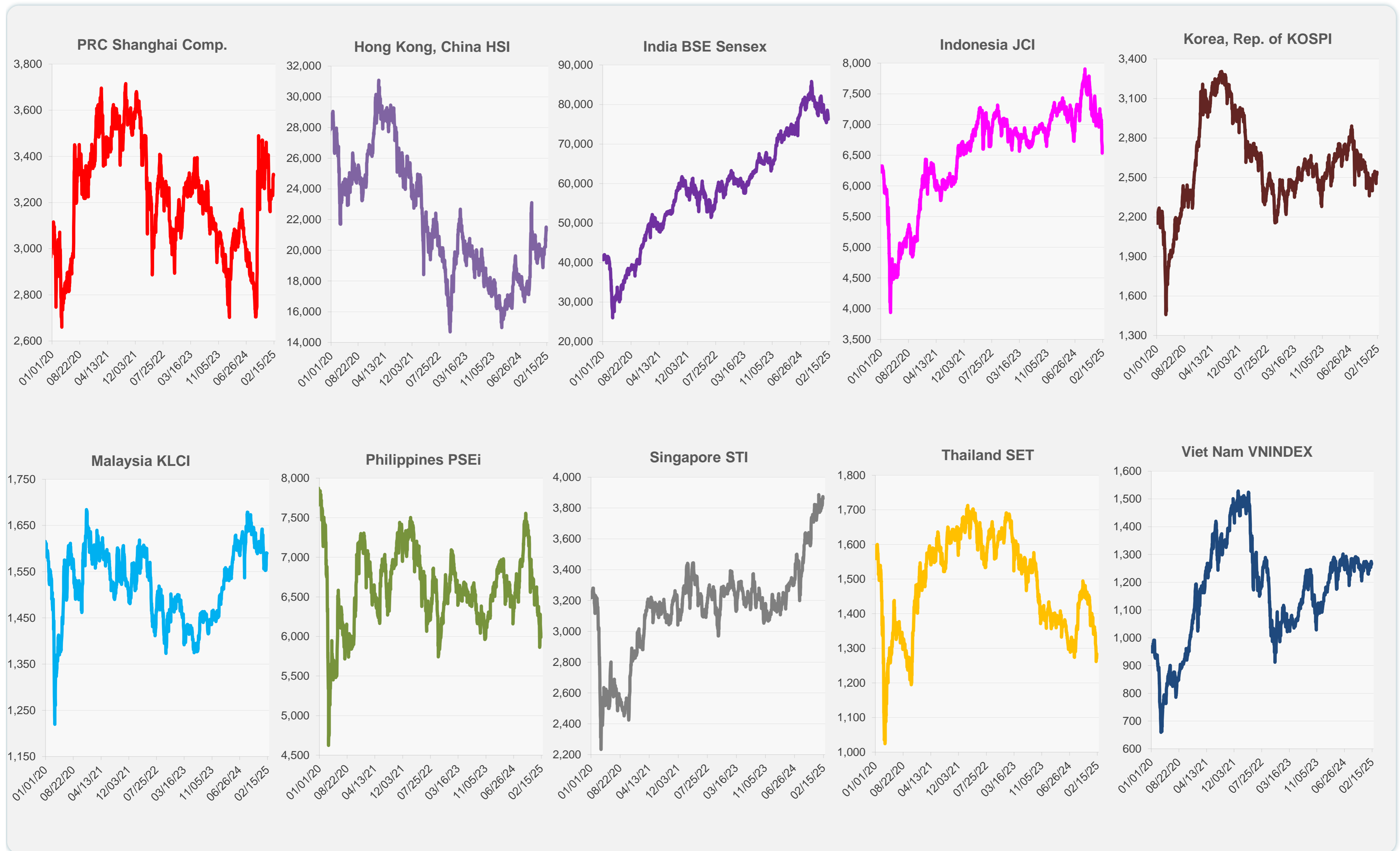
Source: Haver Analytics.

Daily Market Watch
STOCK INDEXES

	Latest Closing	% change from Previous Day	% change from 01-Jan-25
US Dow Jones Ind Avg	44,593.65	0.28	4.82
US NASDAQ	19,643.86	-0.36	1.72
US S&P 500	6,068.50	0.03	3.18
UK FTSE 100	8,777.39	0.11	7.39
EURO STOXX 50	5,390.91	0.61	10.11
Japan NIKKEI 225	38,801.17	0.00	-2.74
Bangladesh DSEX	5,192.05	0.34	-0.50
PRC Shanghai Comp.	3,318.06	-0.12	-1.01
Hong Kong, China HSI	21,294.86	-1.06	6.16
India BSE Sensex	76,293.60	-1.32	-2.82
Indonesia JCI	6,531.99	-1.75	-7.74
Korea, Rep. of KOSPI	2,539.05	0.71	5.82
Malaysia KLCI	1,589.95	0.00	-3.19
Pakistan KSE 100	113,010.38	1.47	-3.42
Philippines PSEi	5,987.75	-0.82	-8.29
Singapore STI	3,860.76	-0.37	1.93
Sri Lanka CSEALL	16,345.30	-1.33	2.51
Taipei, China TWSE	23,384.05	0.57	1.51
Thailand SET	1,283.97	1.06	-8.30
Viet Nam VNINDEX	1,268.45	0.41	0.13



Sources: ADB calculations using data from CEIC Data Company and Haver Analytics.



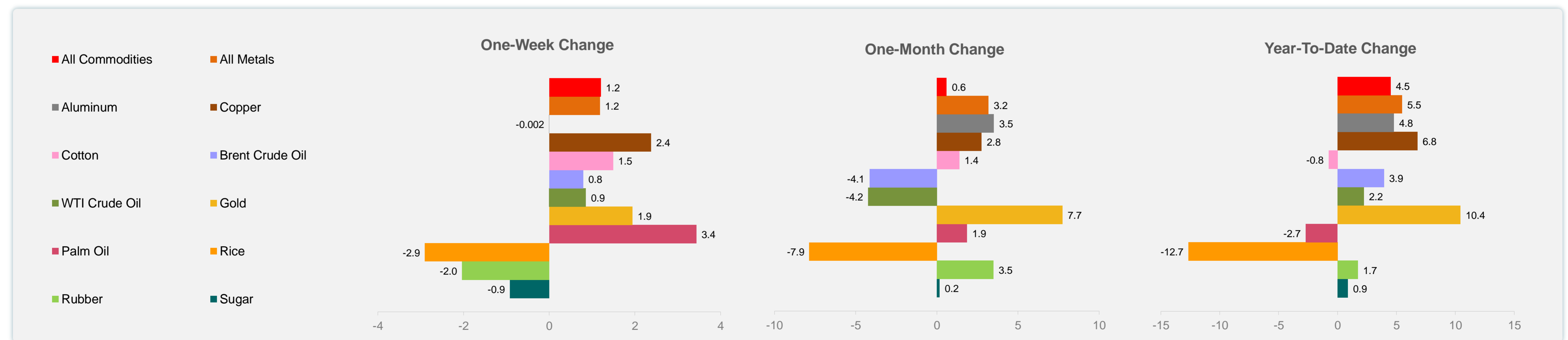
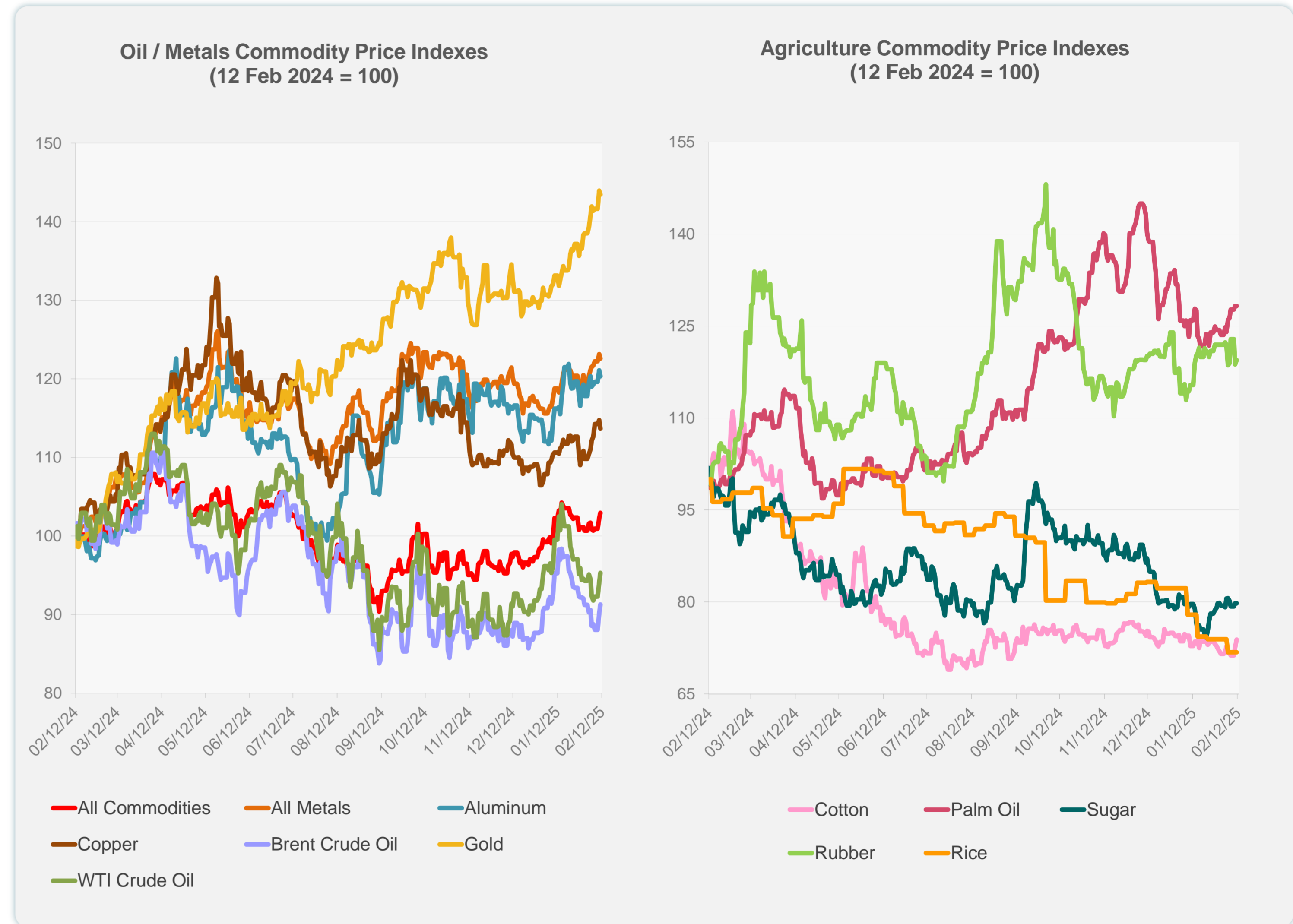
Sources: CEIC Data Company and Haver Analytics.

Daily Market Watch
COMMODITY PRICES

12 February 2025, 9:00 AM Manila

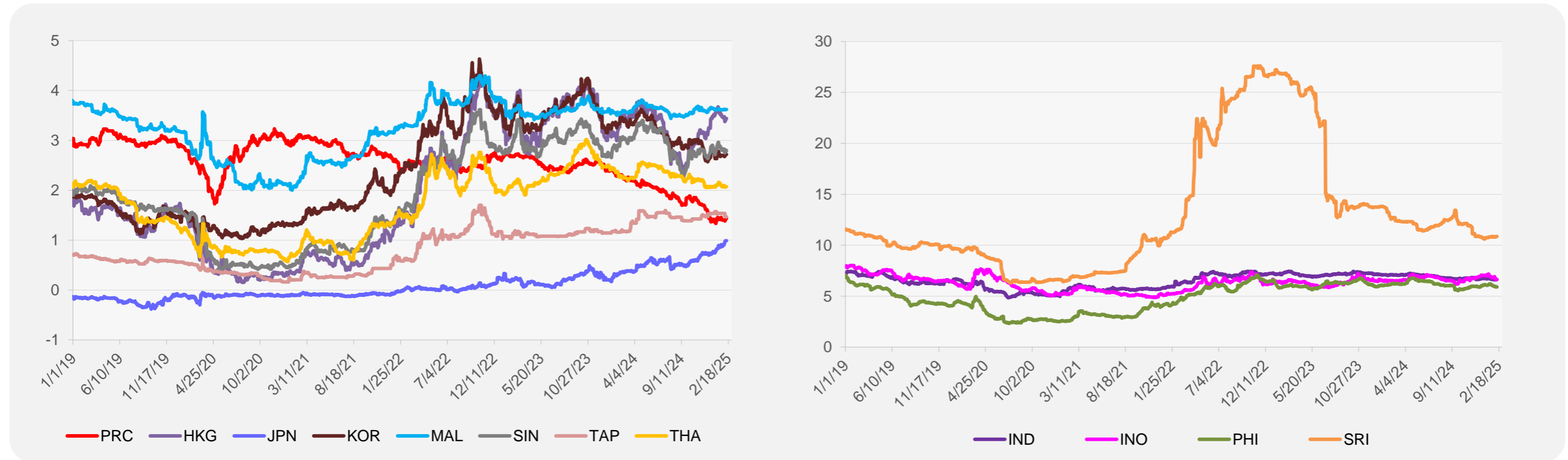
	Unit	Latest Closing	% change from Previous Day	% change from 01-Jan-25
S&P All Commodities	US\$	574.40	0.69	4.50
S&P All Metals	US\$	324.22	-0.45	5.48
Aluminum	US\$/metric ton	2,647.66	-0.64	4.78
Copper	US\$/metric ton	9,239.16	-0.97	6.78
Cotton	US cents/lb	65.40	1.73	-0.76
Brent Crude Oil	US\$/barrel	77.03	1.30	3.95
WTI Crude Oil	US\$/barrel	73.32	1.38	2.23
Gold	US\$/troy oz	2,897.91	-0.36	10.42
Palm Oil	US\$/metric tonne	1,070.40	0.00	-2.70
Rice ¹	US\$/metric ton	469.00	0.00	-12.66
Rubber ²	US\$/kg	240.90	0.58	1.73
Sugar	US cents/lb	18.36	0.00	0.88

¹ Latest closing price from 22 January 2025.
² Singapore Exchange, Ribbed Smoked Sheet Rubber.

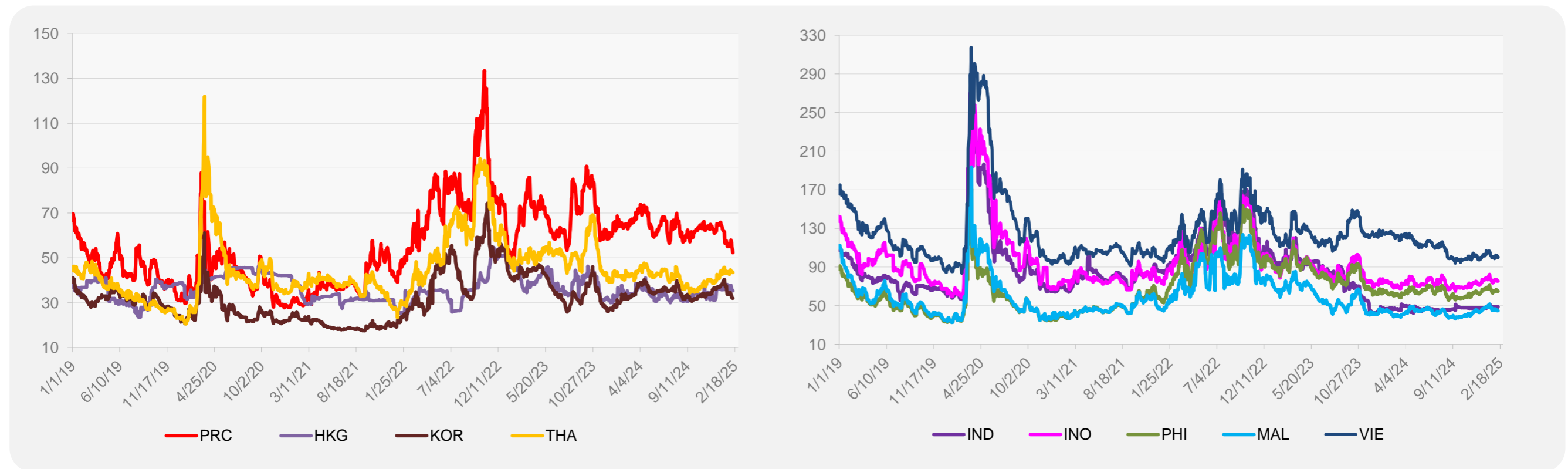


Source: ADB calculations using data from Bloomberg.

5-YEAR LOCAL CURRENCY GOVERNMENT BOND YIELDS (%)



5-YEAR CREDIT DEFAULT SWAP¹



¹ In USD and based on sovereign bonds.
Source: ADB calculations using data from Bloomberg.